

Exercise 49

For the following exercises, use the graphs of f , shown in Figure 4, and g , shown in Figure 5, to evaluate the expressions.

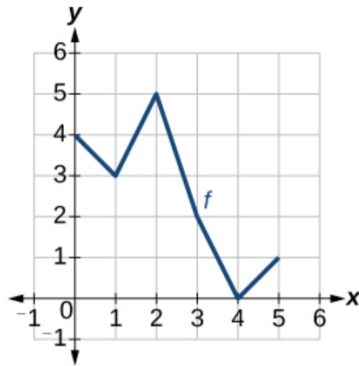


Figure 4

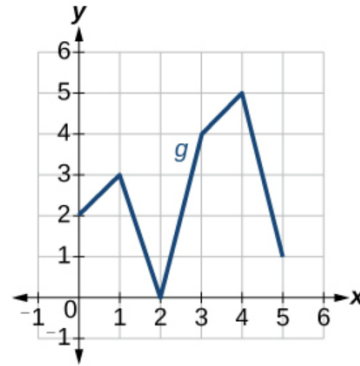
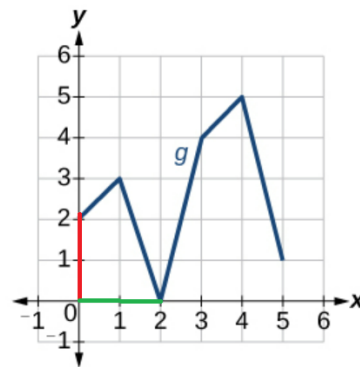
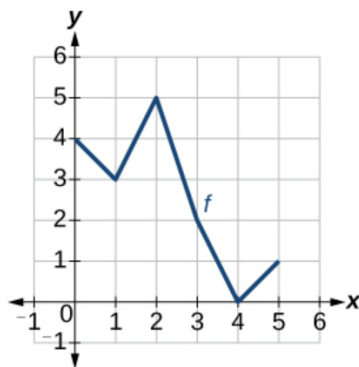


Figure 5

$$g(g(0))$$

Solution

Notice from the graphs that $g(0) = 2$ and $g(2) = 0$.



Therefore,

$$g(g(0)) = g(2) = 0.$$